

PRESENTED BY



**AN ISO 17025  
ACCREDITED COMPANY**

DALLAS      FT WORTH      AUSTIN      HOUSTON

[NICOLSCALES.COM](http://NICOLSCALES.COM)

---

800.225.8181

[CONTACT US](#)

NICOL SCALES & MEASUREMENT IS AN ISO ACCREDITED CALIBRATION  
COMPANY THAT HAS PROVIDED CALIBRATION, REPAIR AND SALES OF ALL TYPES  
OF WEIGHING AND MEASUREMENT PRODUCTS SINCE 1931.



Weighing Equipment for the World

**SDL #:** 7032

**DATE:** October 30, 2013

|  |   |   |
|--|---|---|
| <b>TO:</b> Administrators /Cust. Support Ctrs.<br>Area Sales Managers<br>Area Service Managers<br>Authorized Canadian Distributors<br>Authorized Domestic Distributors | Customer Service<br>Engineering<br>Export Management<br>International Distributors<br>Marketing | Manufacturing Mgmt.<br>Regional Managers<br>Solutions Group<br>Technical Support<br>Technicians |
|--|---|---|

**FROM:** Derrick Mashaney, Kansas City

**SUBJ:** Transcore RFID Reader Interface for FB2550 instruments

Fairbanks is pleased to announce the release of the Transcore RFID Reader interface for all FB2550 instruments and Driver Assist Terminals (DAT). This feature will allow you to interface the Transcore model Encompass 4 Reader (item 10-4002-009) to the FB2550 and configure the reader directly from the FB2550. This new feature adds more automation to the FB2550, further accelerating your customers' weighing process.

The Transcore RFID Reader interface is included in all FB2550 instruments using revision 4.3 or higher software. Revision 4.3 software began shipping on August 29, 2013.

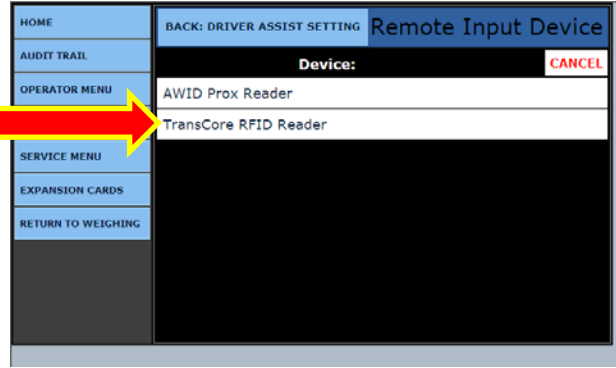
Please review the following pages for a brief overview of this feature.



If you have any questions, concerns, or comments feel free to give me a call at 816-448-4249 or by e-mail [dmashaney@fairbanks.com](mailto:dmashaney@fairbanks.com).

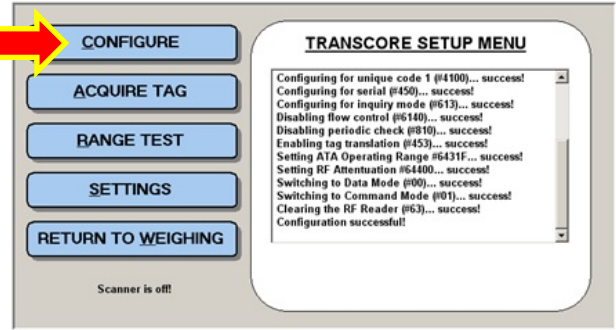
There are two (2) RFID Reader options for the FB2550. The short range RFID reader, more commonly known as a proximity card reader, has pretty much a plug and play setup.

However, the Transcore Reader must be configured.

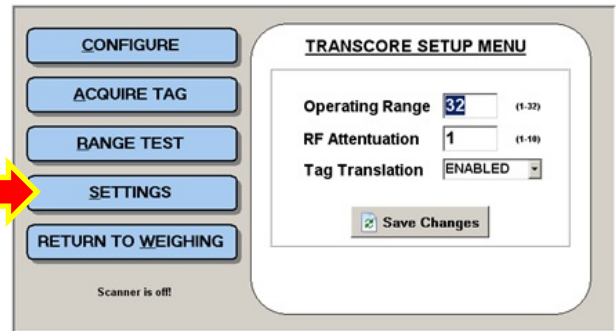


Typically, to configure the Transcore Reader, you have to connect it to a PC.

However the FB2550 now has the required configuration tools built-in to the FB2550 application. No need for a PC to configure the reader!

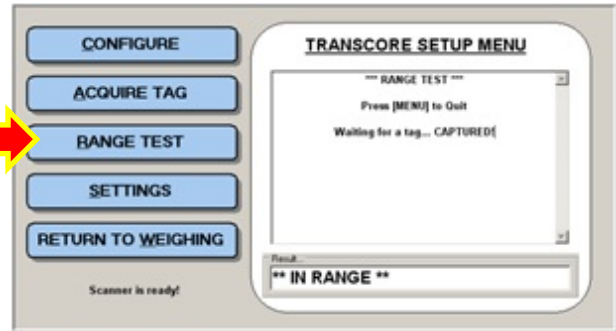


Because the Encompass 4 configuration is performed through the FB2550, installation and configuration time are reduced.



Test tag read range.

Dial in the positioning of the reader for maximum reads without incorrectly reading tags from bypass traffic.



The FB2550 also has a built-in tester for reading tags.

Simply place a tag in front of the reader and the tag ID will be displayed.

