

PRESENTED BY



**AN ISO 17025
ACCREDITED COMPANY**

DALLAS FT WORTH AUSTIN HOUSTON

NICOLSCALES.COM

800.225.8181

[CONTACT US](#)

NICOL SCALES & MEASUREMENT IS AN ISO ACCREDITED CALIBRATION
COMPANY THAT HAS PROVIDED CALIBRATION, REPAIR AND SALES OF ALL TYPES
OF WEIGHING AND MEASUREMENT PRODUCTS SINCE 1931.



SDL #: 6987

DATE: November 16, 2012

TO:	Administrators /Cust. Support Ctrs. Area Sales Managers Area Service Managers Authorized Canadian Distributors Authorized Domestic Distributors	Customer Service Engineering Export Management International Distributors Marketing	Manufacturing Mgmt. Regional Managers Solutions Group Technical Support Technicians
FROM:	Mike Wilkinson, Heavy Capacity Product Manager, Kansas City		
SUBJ:	Rail Scale Hardware Kits		

Rail scale hardware for Fairbanks' AAR and Series 2000 scales has never been easier to order. Beginning today, you can order kits that suit your specific needs – right from the catalog. In the past, requests for rail scale hardware were managed through the Solutions Group because every installation was different. In some cases, rail contractors provided some, but not all, hardware. Including all of the hardware with each scale was unnecessary. Today, Fairbanks is releasing a variety of kits through the Heavy Capacity Product Catalog to make your rail scale planning easier. **The hardware kits in the catalog are designed for 115# rail only.**

For AAR scales, you will find 3 kits available. You simply select what components your installation will require.

- Anti-Creep Kits
- Live Rail Hardware Kits
- Approach Kits

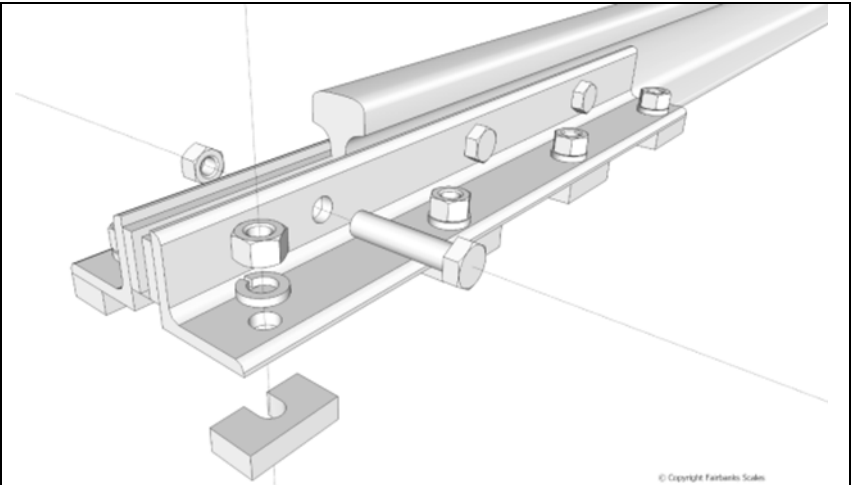
Anti-creep kits consist of devices at each end of the scale and one set for the live rail. These maintain proper gaps between the live and dead rail to prevent scale binding. Live rail hardware kits include the components necessary to secure the live rail directly to the AAR scale. Finally, you will be able to order either a 25' or 50' approach hardware kit. These kits include the necessary J-anchors and hardware to secure the approach rail.

For 2000 Series scales there are 4 kits available.

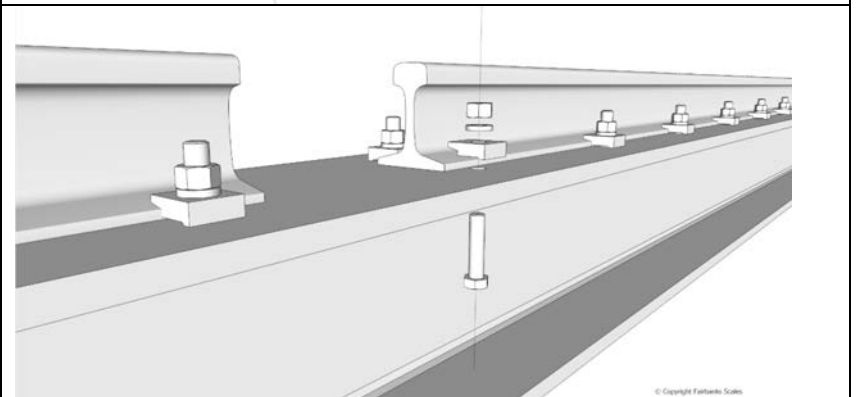
- Anti-Creep Kits
- Live Rail Hardware Kits
- Approach Kits
- Dead-span Hardware Kits

The anti-creep kit contains hardware for one (1) scale module. If more than one 2000 Series scale module is installed, be sure to order two (2) anti-creep kits. Live rail hardware kits are sized based on the scale module length. Approach kits are available for 12.5' and 25' lengths. Finally, a dead-span hardware kit is available. When a dead-span is used, this kit will provide the necessary J-anchors and hardware to level and secure the dead-span rail.

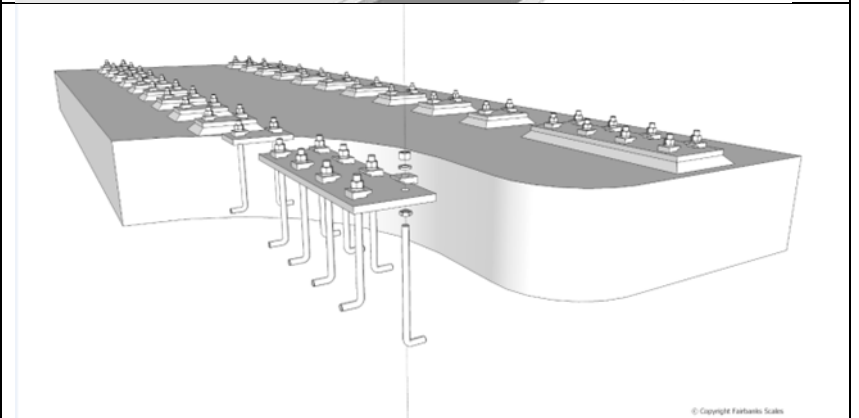
ANTI-CREEP KIT



LIVE RAIL HARDWARE KIT



APPROACH & DEADSPAN
HARDWARE KITS



See Heavy Capacity product catalog for ordering details.

If you have any questions, concerns, or comments feel free to give me a call at 816-448-4202 or by e-mail to mwilkinson@fairbanks.com.